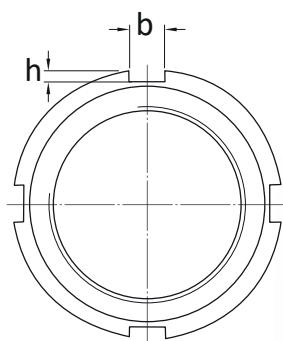
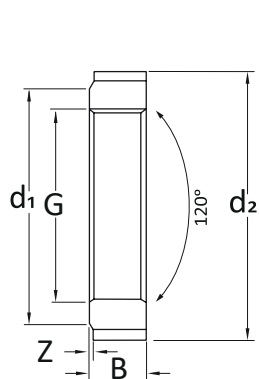


Materiais: Aço, Aço INOX AISI 201, Aço INOX AISI 320 e Aço INOX AISI 316

Norma: DIN 1804

Código	Rosca	d2	d1	B	b	h	Z
KMW M 10	M 10x1	25	20	6	5	2	0.5
KMW M 12	M 12x1.5	28	23	6	5	2	0.5
KMW M 14	M 14x1.5	30	25	7	5	2	0.5
KMW M 16	M 16x1.5	32	27	7	5	2	0.5
KMW M 18	M 18x1.5	34	28	8	6	2.5	0.5
KMW M 20	M 20x1.5	36	30	8	6	2.5	0.5
KMW M 22	M 22x1.5	40	34	9	6	2.5	0.5
KMW M 24	M 24x1.5	42	36	9	6	2.5	0.5
KMW M 26	M 26x1.5	45	38	10	7	3	0.5
KMW M 28	M 28x1.5	50	43	10	7	3	0.5
KMW M 30	M 30x1.5	50	43	10	7	3	0.5
KMW M 32	M 32x1.5	52	45	11	7	3	0.5
KMW M 35	M 35x1.5	55	48	11	7	3	0.5
KMW M 38	M 38x1.5	58	50	11	8	3.5	0.5
KMW M 40	M 40x1.5	62	54	12	8	3.5	0.5
KMW M 42	M 42x1.5	62	54	12	8	3.5	0.5
KMW M 45	M 45x1.5	68	60	12	8	3.5	0.5
KMW M 48	M 48x1.5	75	67	13	8	3.5	0.5
KMW M 50	M 50x1.5	75	67	13	8	3.5	0.5
KMW M 52	M 52x1.5	80	70	13	10	4	0.5
KMW M 55	M 55x1.5	80	70	13	10	4	0.5
KMW M 58	M 58x1.5	90	80	13	10	4	0.5
KMW M 60	M 60x1.5	90	80	13	10	4	0.5
KMW M 62	M 62x1.5	95	85	14	10	4	0.5
KMW M 65	M 65x1.5	95	85	14	10	4	0.5
KMW M 68	M 68x1.5	100	90	14	10	4	0.5
KMW M 70	M 70x1.5	100	90	14	10	4	0.5
KMW M 72	M 72x1.5	110	100	14	10	4	0.5



Código	Rosca	d2	d1	B	b	h	Z
KMW M 75	M 75x1.5	110	100	14	10	4	0.5
KMW M 80	M 80x2	115	105	16	10	4	1
KMW M 85	M 85x2	120	110	16	10	4	1
KMW M 90	M 90x2	130	120	16	10	4	1
KMW M 95	M 95x2	135	120	16	12	5	1
KMW M 100	M 100x2	145	130	16	12	5	1
KMW M 105	M 105x2	155	140	16	12	5	1
KMW M 110	M 110x2	155	140	16	12	5	1
KMW M 115	M 115x2	165	150	18	12	5	1
KMW M 120	M 120x2	165	150	18	12	5	1
KMW M 125	M 125x2	180	165	18	12	5	1
KMW M 130	M 130x3	180	165	18	12	5	1